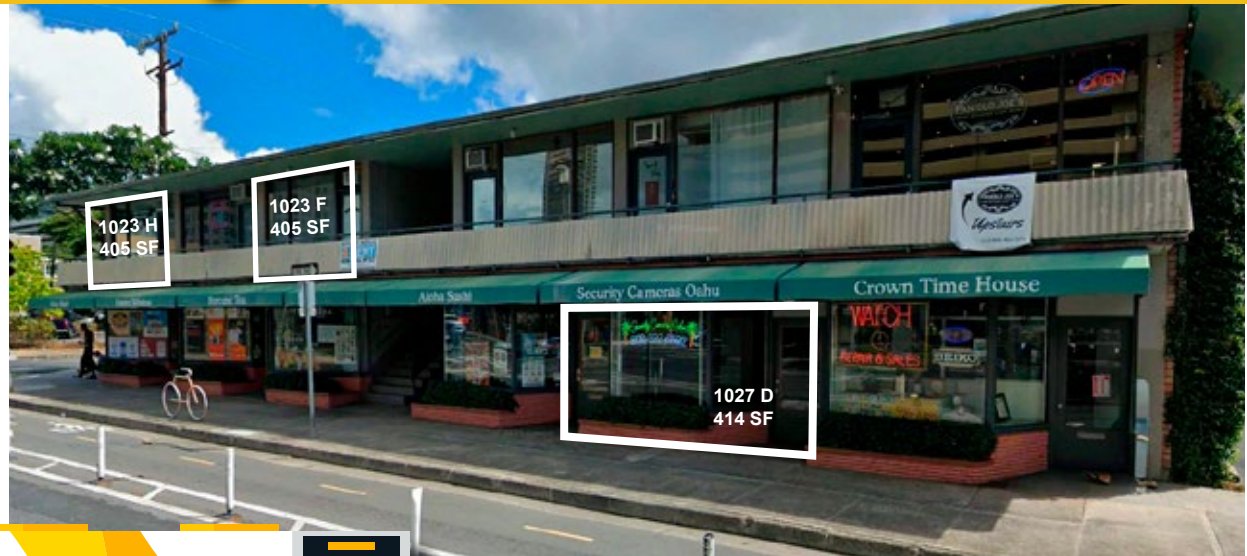


Sophie Walker Building FOR LEASE: RETAIL / OFFICE

1017/1023 PENSACOLA ST
HONOLULU, HI 96814



24,200 Vehicles/Day* - HIGH VISIBILITY

THE SOPHIE WALKER BUILDING, centrally located in urban Honolulu, offers high-visibility signage on Pensacola Street and easy access for pedestrians, vehicles, and bus riders. On-site businesses include food and beverage, retail, hair styling, health services, watch repair, and education programs.

SUITE	RSF	RATE	CAM	DESCRIPTION
1027 D	414	\$3.00	\$2.40	Ground floor office with access along the bus line. Ideal for creative or professional office use.
1023 F	405	\$1.15	\$2.40	2nd Floor with high visibility and convenient pedestrian and vehicular access
1023 H	405	\$1.15	\$2.40	2nd Floor corner space facing Young and Pensacola Streets. High visibility and convenient pedestrian and vehicular access. Parking: \$65/Month.



Hawaii
Commercial
Real Estate
hawaiiacre.com



SUMMER MERIT (S)
Vice President
HI LIC #RS-83889
summer@hawaiiacre.com
+1 (808) 375-9531



TAYLOR HIGA (S)
Property Management/Leasing
HI LIC #RS-86404
taylor@hawaiiacre.com
+1 (808) 260-6441

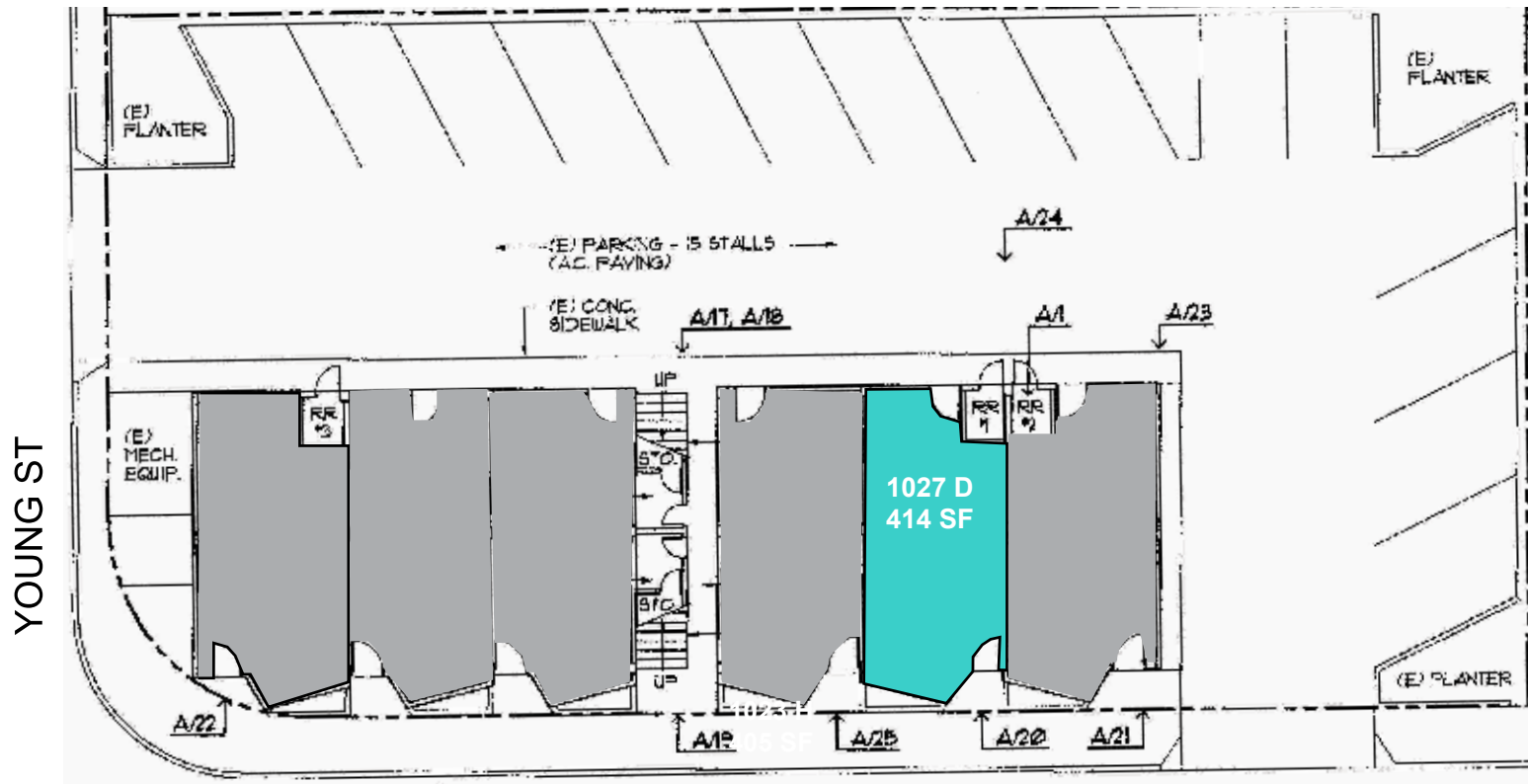
*Source ©2022 Kalibrate Technologies (Q3 2022)

Posted 01/18/26. The information presented was obtained from sources believed reliable. While we do not doubt its accuracy, we have not verified it and make no guarantee, warranty or representation about it.

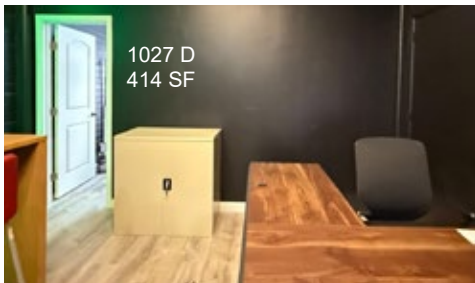
Sophie Walker Building FOR LEASE: RETAIL / OFFICE

1017-1023 PENSACOLA ST, HONOLULU, HI 96814

1st FLOOR PLAN



PENSACOLA ST



24,200 Vehicles/Day* - HIGH VISIBILITY



**Hawaii
Commercial
Real Estate**
hawaiiacre.com



SUMMER MERIT (S)
Vice President
HI LIC #RS-83889
summer@hawaiiacre.com
+1 (808) 375-9531



TAYLOR HIGA (S)
Property Management/Leasing
HI LIC #RS-86404
taylor@hawaiiacre.com
+1 (808) 260-6441

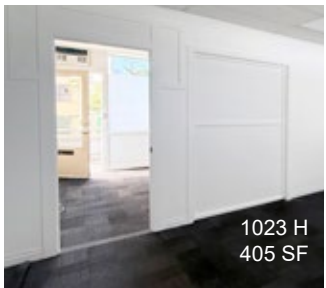
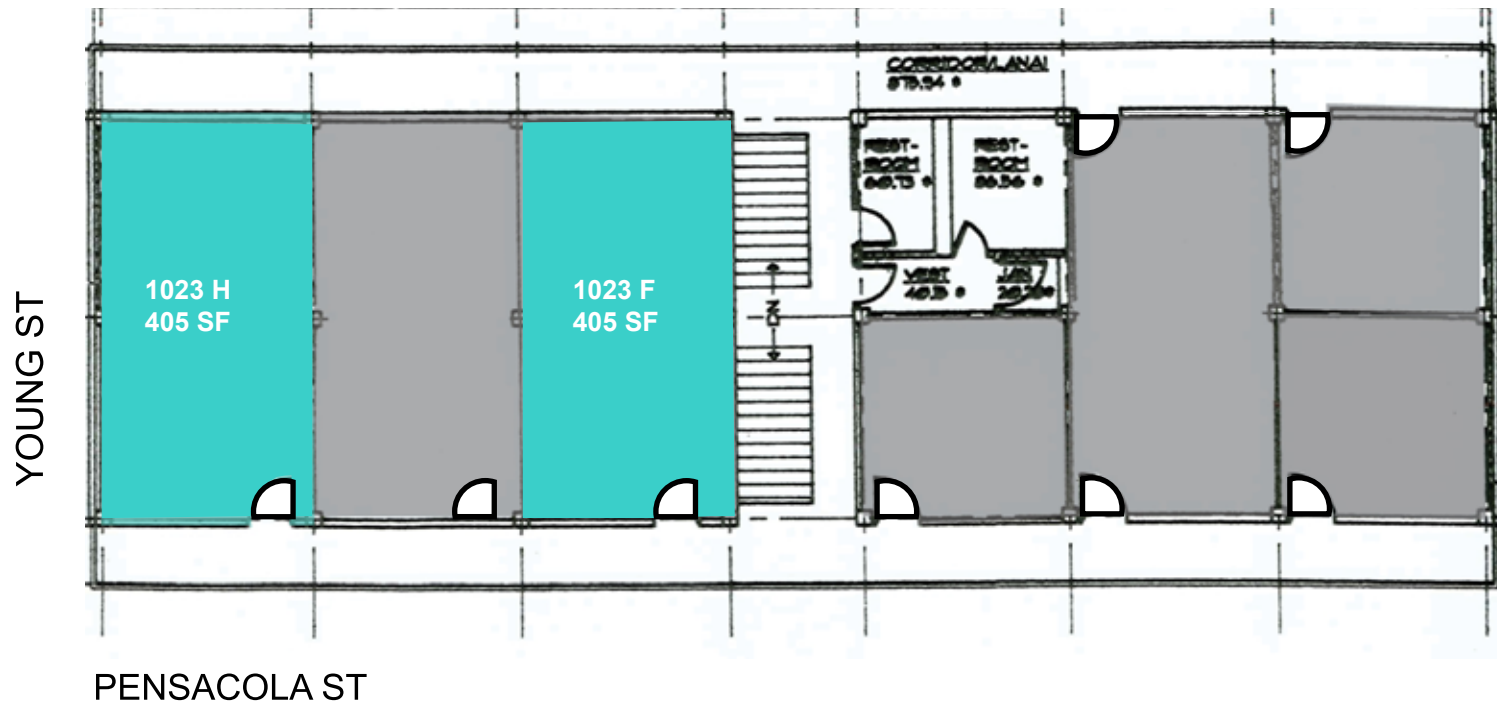


Sophie Walker Building

FOR LEASE: RETAIL / OFFICE

1017-1023 PENSACOLA ST, HONOLULU, HI 96814

2nd FLOOR PLAN



24,200 Vehicles/Day* - HIGH VISIBILITY



**Hawaii
Commercial
Real Estate**
hawaiiCRE.com



SUMMER MERIT (S)
Vice President
HI LIC #RS-83889
summer@hawaiiCRE.com
+1 (808) 375-9531



TAYLOR HIGA (S)
Property Management/Leasing
HI LIC #RS-86404
taylor@hawaiiCRE.com
+1 (808) 260-6441

