

Historic Downtown Office & Ground Floor Retail For Lease

STANGENWALD BUILDING

119 MERCHANT STREET, HONOLULU, HI 96813

GROUND FLOOR SPACE + PRESTIGIOUS ADDRESS!

Built in 1901, at six stories the iconic Stangenwald building is considered Hawaii's first skyscraper. The property is situated in the center of the Merchant Street historic district. Rich in history several of Honolulu's influential individuals and prominent companies have claimed this prestigious address.

LEASING INFORMATION

BASE RENT	\$1.30 - \$3.00/RSF/MONTH
Full Service CAM	\$1.55/RSF/MONTH

AVAILABLE SUITES

SUITE	RSF	DESCRIPTION
101	734	Turn-Key coffee shop with modern design and high ceilings. HIGH VISIBILITY location with a TRAF-FIC Count of 14,500 Vehicles/day* and a Walk Score of 98%**
102	981	Ground floor office space. Contiguous with 101.
200	4,047	Full floor with conference room, 10 private offices, 2 breakrooms and storage.
402	1,867	5 Private offices, open area, flexible space, natural light with views of iconic Merchant Street.
408	1,341	2 Private offices, 1 conference room, storage and break area.
Storage	85-657	CAM only. Various sizes of secured storage cages.

SOURCE: * © 2024 KALIBRATE TECHNOLOGIES (Q2 2024) | **WALK SCORE ©

PARKING OPTIONS

PROPERTY	ADDRESS	PARKING COMPANY
1 WALMART	1032 Fort Street Mall	PROPARK: (808) 971-7755
2 HARBOR COURT	55 Merchant Street	ABM: (808) 522-1240
3 CPB PLAZA	220 South King Street	ABM: (808) 286-3594
4 ALOHA TOWER	1 Aloha Tower Drive	PROPARK: (808) 566-2314
5 EXECUTIVE CTR	1088 Bishop Street	STANDARD: (808) 532-2675



Posted 04/21/25. The information presented was obtained from sources believed reliable. While we do not doubt its accuracy, we have not verified it and make no guarantee, warranty or representation about it.



**Hawaii
Commercial
Real Estate**

FOCUS + EXPERIENCE = RESULTS
www.hawaiiacre.com

JAMIE BROWN (B)
PRESIDENT, CCIM SIOR
Lic# RB-17203
(808) 429-9757
jamie@hawaiiacre.com

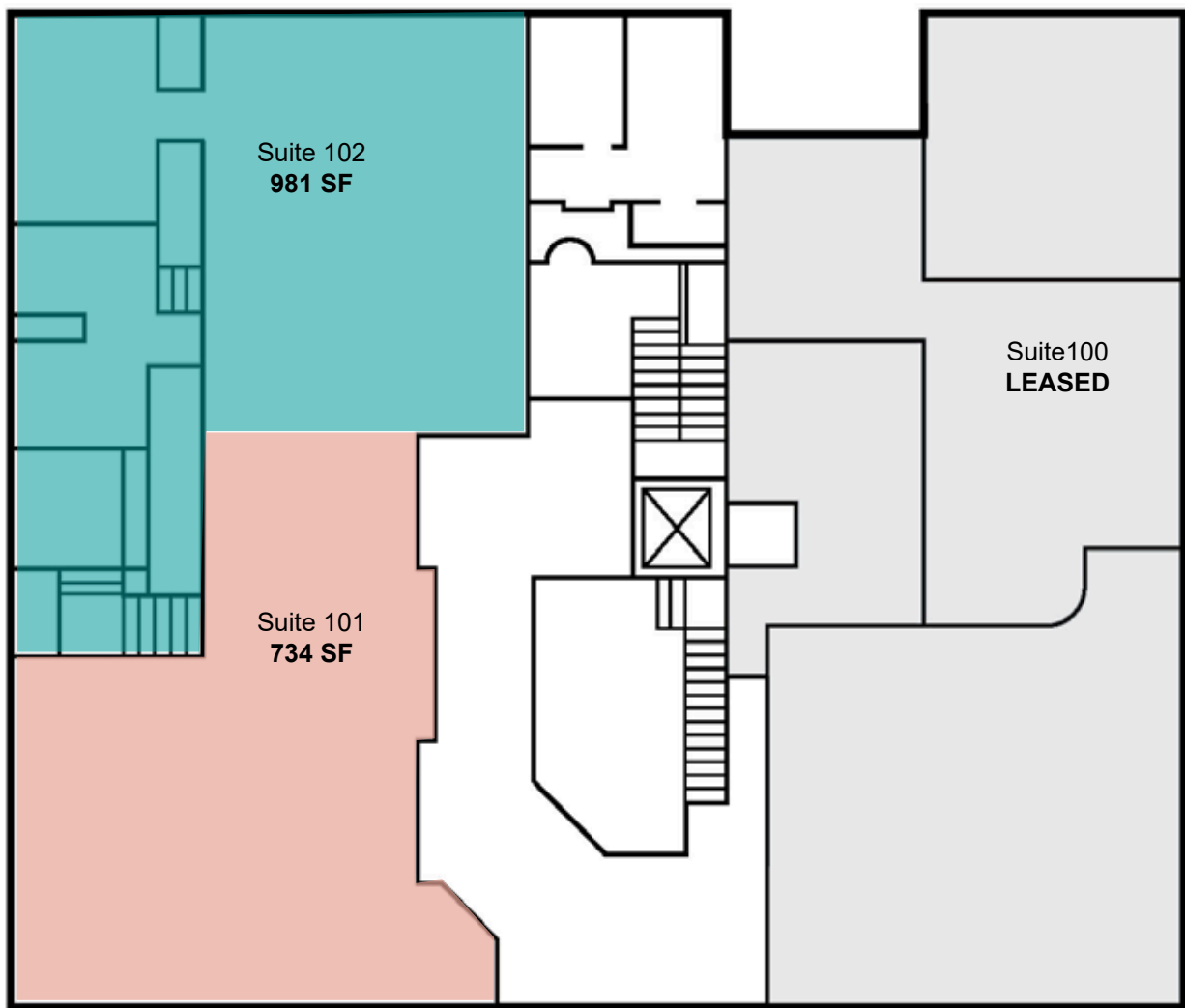
SUMMER MERIT (S)
VICE PRESIDENT
Lic# RS-83889
(808) 375-9531
summer@hawaiiacre.com

PATTY PAK (S)
PROPERTY MANAGER
Lic# RS-87869
(808) 295-1689
patty@hawaiiacre.com

FLOOR PLAN - GROUND FLOOR

STANGENWALD BUILDING

119 MERCHANT STREET, HONOLULU, HI 96813



MERCHANT STREET

Posted 04/21/25. The information presented was obtained from sources believed reliable. While we do not doubt its accuracy, we have not verified it and make no guarantee, warranty or representation about it.



**Hawaii
Commercial
Real Estate**

FOCUS + EXPERIENCE = RESULTS
www.hawaiiicre.com

JAMIE BROWN (B)
PRESIDENT, CCIM SIOR
Lic# RB-17203
(808) 429-9757
jamie@hawaiiicre.com

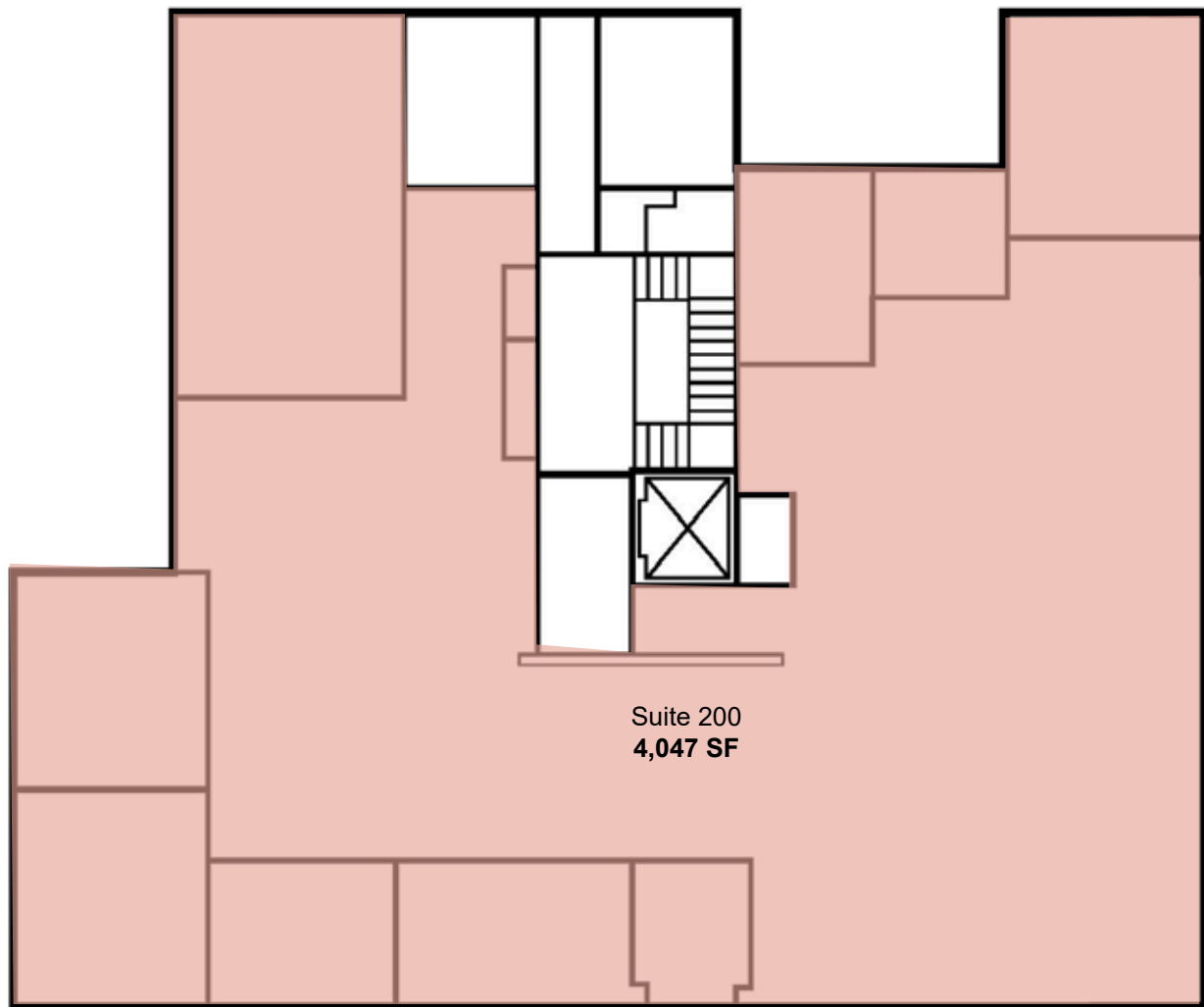
SUMMER MERIT (S)
VICE PRESIDENT
Lic# RS-83889
(808) 375-9531
summer@hawaiiicre.com

PATTY PAK (S)
PROPERTY MANAGER
Lic# RS-87869
(808) 295-1689
patty@hawaiiicre.com

FLOOR PLAN - SECOND (FULL) FLOOR

STANGENWALD BUILDING

119 MERCHANT STREET, HONOLULU, HI 96813



Suite 200
4,047 SF

MERCHANT STREET

Posted 04/21/25. The information presented was obtained from sources believed reliable. While we do not doubt its accuracy, we have not verified it and make no guarantee, warranty or representation about it.



**Hawaii
Commercial
Real Estate**

FOCUS + EXPERIENCE = RESULTS
www.hawaiiacre.com

JAMIE BROWN (B)
PRESIDENT, CCIM SIOR
Lic# RB-17203
(808) 429-9757
jamie@hawaiiacre.com

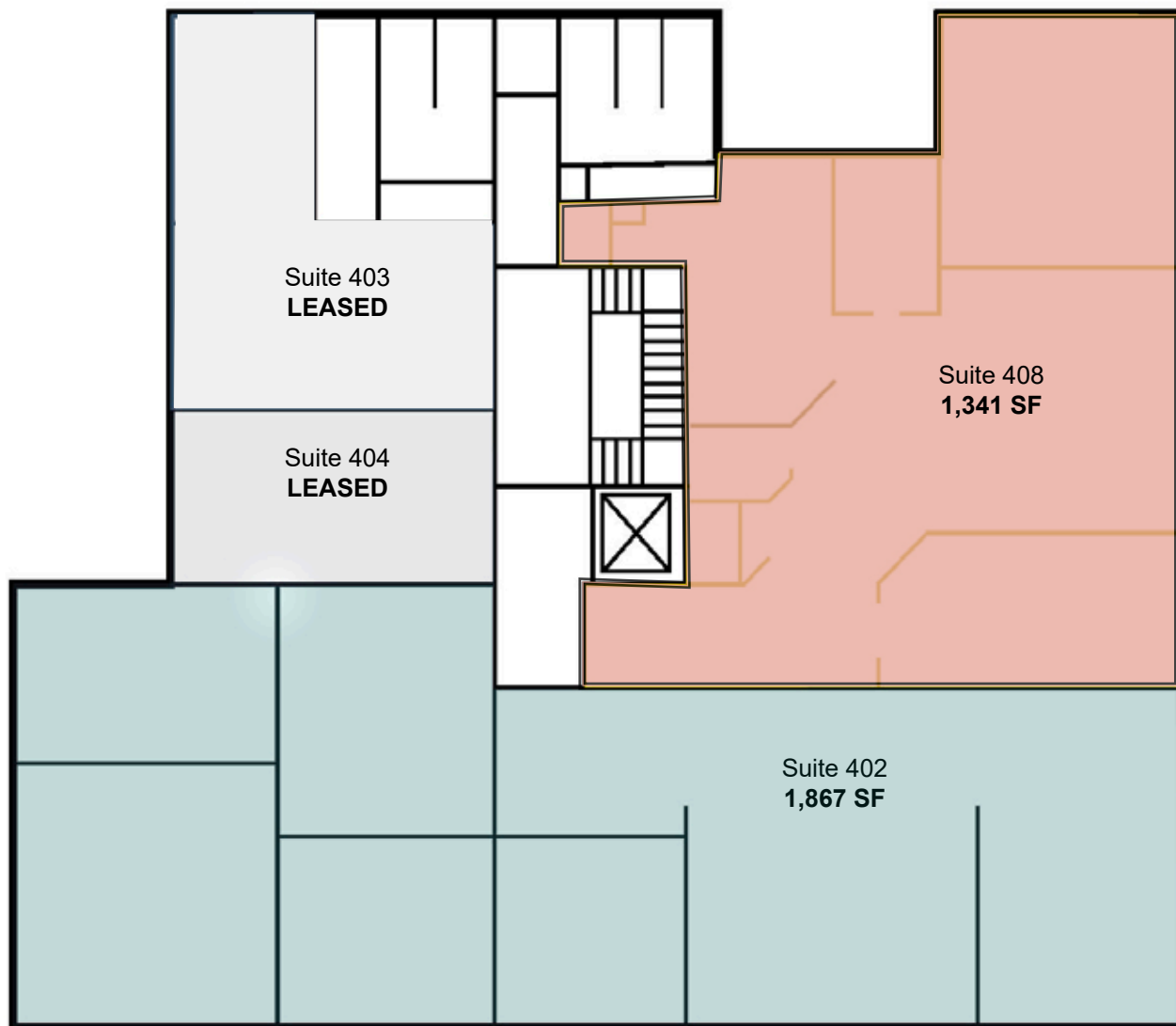
SUMMER MERIT (S)
VICE PRESIDENT
Lic# RS-83889
(808) 375-9531
summer@hawaiiacre.com

PATTY PAK (S)
PROPERTY MANAGER
Lic# RS-87869
(808) 295-1689
patty@hawaiiacre.com

FLOOR PLANS - FOURTH FLOOR

STANGENWALD BUILDING

119 MERCHANT STREET, HONOLULU, HI 96813



MERCHANT STREET

Posted 04/21/25. The information presented was obtained from sources believed reliable. While we do not doubt its accuracy, we have not verified it and make no guarantee, warranty or representation about it.



**Hawaii
Commercial
Real Estate**

FOCUS + EXPERIENCE = RESULTS
www.hawaiiCRE.com

JAMIE BROWN (B)
PRESIDENT, CCIM SIOR
Lic# RB-17203
(808) 429-9757
jamie@hawaiiCRE.com

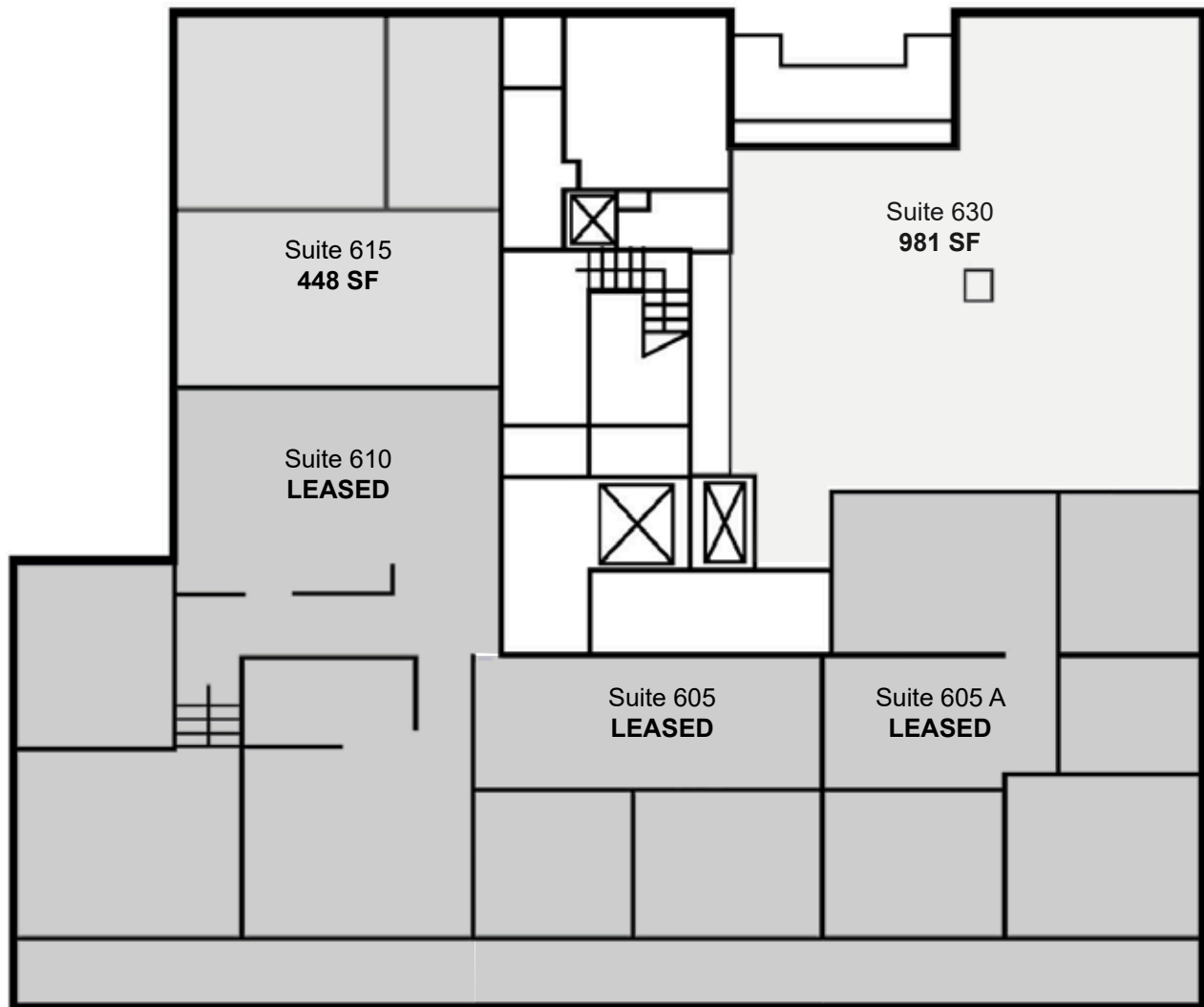
SUMMER MERIT (S)
VICE PRESIDENT
Lic# RS-83889
(808) 375-9531
summer@hawaiiCRE.com

PATTY PAK (S)
PROPERTY MANAGER
Lic# RS-87869
(808) 295-1689
patty@hawaiiCRE.com

FLOOR PLAN - SIXTH FLOOR

STANGENWALD BUILDING

119 MERCHANT STREET, HONOLULU, HI 96813



MERCHANT STREET

Posted 04/21/25. The information presented was obtained from sources believed reliable. While we do not doubt its accuracy, we have not verified it and make no guarantee, warranty or representation about it.



**Hawaii
Commercial
Real Estate**

FOCUS + EXPERIENCE = RESULTS
www.hawaiiCRE.com

JAMIE BROWN (B)
PRESIDENT, CCIM SIOR
Lic# RB-17203
(808) 429-9757
jamie@hawaiiCRE.com

SUMMER MERIT (S)
VICE PRESIDENT
Lic# RS-83889
(808) 375-9531
summer@hawaiiCRE.com

PATTY PAK (S)
PROPERTY MANAGER
Lic# RS-87869
(808) 295-1689
patty@hawaiiCRE.com