

# INVESTMENT/OWNER-USER PROPERTY FOR SALE

1449 N KING STREET | HONOLULU HI 96817

**High Visibility**  
on the corner of  
N. King & Winant  
Across Farrington  
High School.

**PRICE REDUCED: \$1,777,000**



## OPPORTUNITY ZONE

- 1<sup>ST</sup> FLOOR: Approximately 4,769 SF  
Warehouse/Showroom/Secured Parking
- 2<sup>ND</sup> FLOOR: 929 SF  
2 Bedrm Apt + Bonus Attic Storage
- 1 Block from Waikamilo/Across from  
Farrington High School
- Easy Freeway Access both East & West
- HEAVY POWER & NEW ROOF

## PROPERTY INFORMATION

|               |             |
|---------------|-------------|
| ASKING PRICE  | \$1,990,000 |
| TENURE        | FEE SIMPLE  |
| TMK           | 1-1-5-2-29  |
| BUILDING AREA | 5,698 SF    |
| LAND AREA     | 4,833 SF    |
| ZONING        | BMX-3       |

\*SOURCE: ©2020 KALIBRATE TECHNOLOGIES (Q2 2020). Posted 09/17/2020. Please note: the information above has been obtained from sources believed reliable. While we do not doubt its accuracy, we have not verified it and make no guarantee, warranty or representation about it. Posted 10/28/2020.

For More Information TEXT, EMAIL or CALL



**KATHRYN M. REHG (B)**  
Vice President | 808-228-4356  
kathy@hawaiiire.com



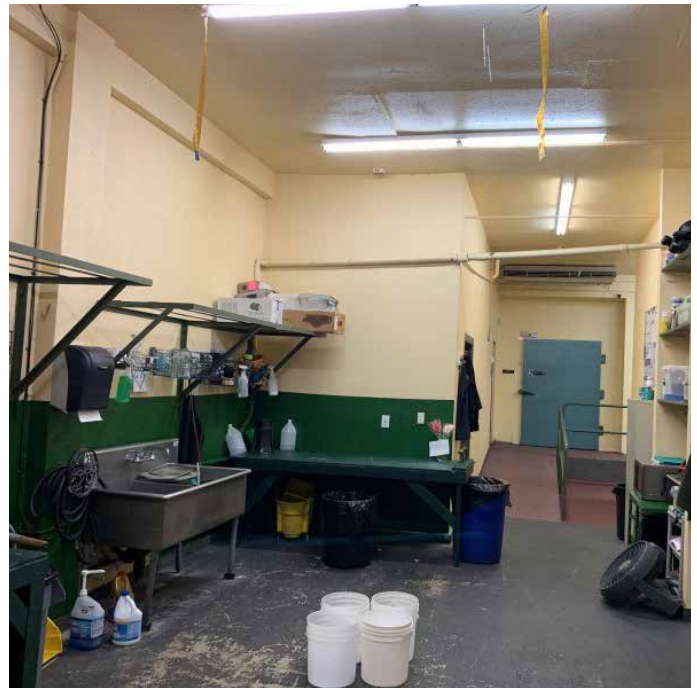
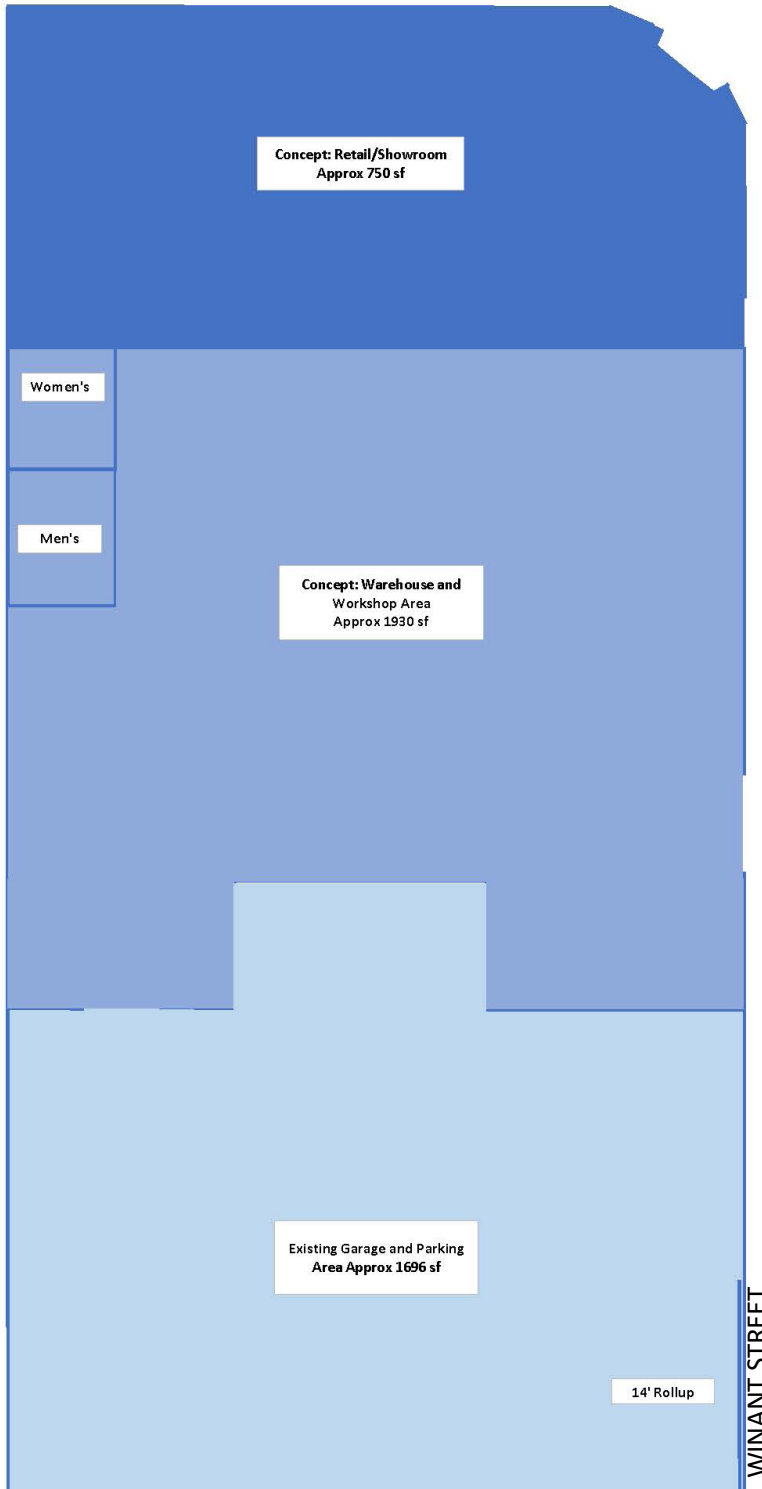
**TED R. KETCHAM (S)**  
Vice President | 808-292-0356  
ted@hawaiiire.com

# INVESTMENT/OWNER-USER PROPERTY FOR SALE

1449 N KING STREET | HONOLULU HI 96817

NORTH KING STREET

## FLOOR PLAN 1<sup>ST</sup> FLR



Work Space, 14' Roll-Up door on Winant Street.

Please note: the information above has been obtained from sources believed reliable. While we do not doubt its accuracy, we have not verified it and make no guarantee, warranty or representation about it. Posted 10/28/2020.

For More Information TEXT, EMAIL or CALL



**KATHRYN M. REHG (B)**  
Vice President | 808-228-4356  
kathy@hawaiiCRE.com

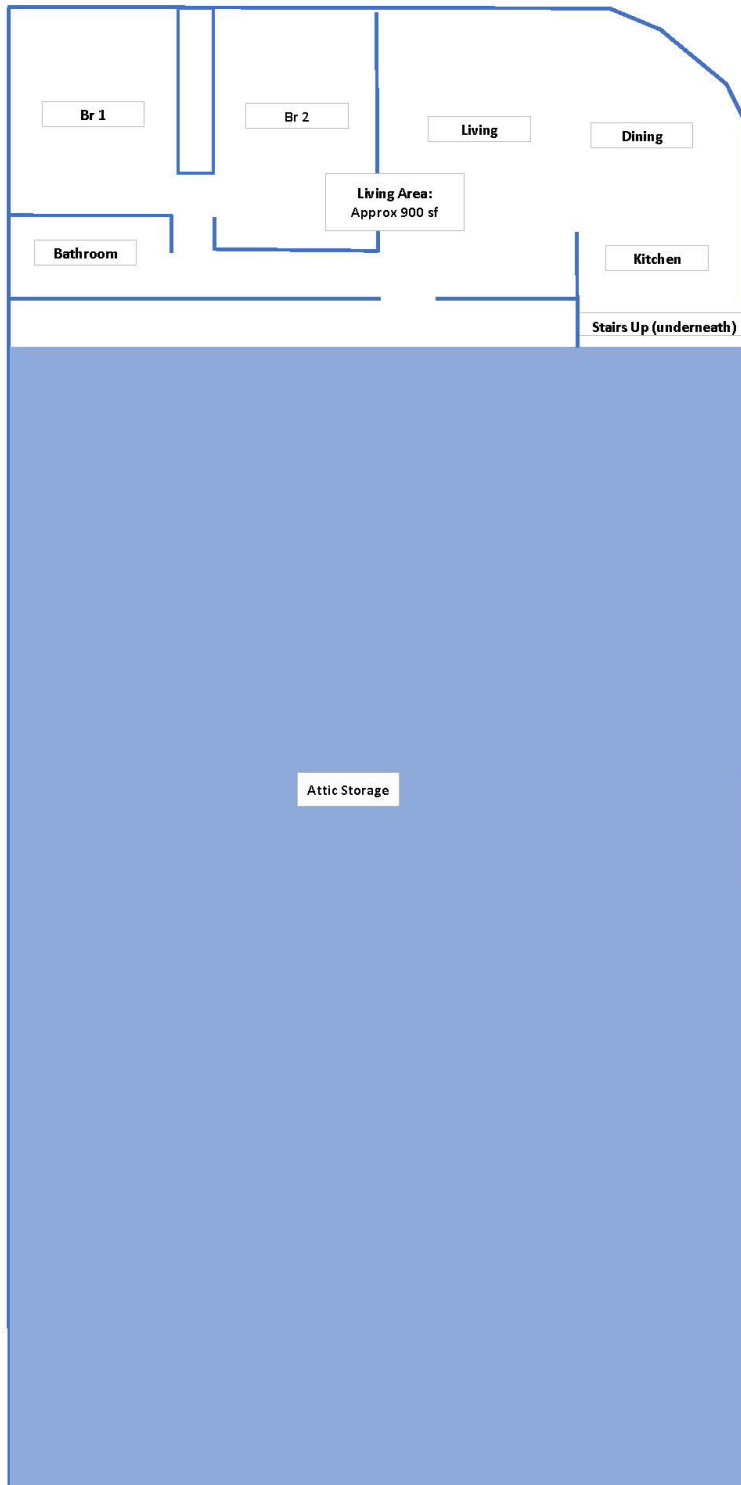


**TED R. KETCHAM (S)**  
Vice President | 808-292-0356  
ted@hawaiiCRE.com

# INVESTMENT/OWNER-USER PROPERTY FOR SALE

1449 N KING STREET | HONOLULU HI 96817

NORTH KING STREET



## FLOOR PLAN 2<sup>ND</sup>FLR



Approximately 929 SF  
2 Bedrm Apt + Bonus Attic Storage

Please note: the information above has been obtained from sources believed reliable. While we do not doubt its accuracy, we have not verified it and make no guarantee, warranty or representation about it. Posted 10/28/2020.

For More Information TEXT, EMAIL or CALL



**KATHRYN M. REHG (B)**  
Vice President | 808-228-4356  
kathy@hawaiiCRE.com



**TED R. KETCHAM (S)**  
Vice President | 808-292-0356  
ted@hawaiiCRE.com