

223 S KING STREET

PRIME GROUND FLOOR SPACE FOR LEASE

The AUSTIN BUILDING

Discover a distinctive space in the heart of Honolulu's Central Business District, perfectly positioned along vibrant South King Street. This ground-floor suite boasts three charming canopied windows and dual entrances, creating an inviting presence for any business. Inside, you'll find a spacious open layout complemented by two private offices and a convenient kitchen—ideal for a dynamic work environment.

SUITE	RSF	RATE
100	2,214	\$2.74/SF/MONTH (GROSS)

- **CREATIVE, FLEXIBLE LAYOUT** with high ceilings and expansive open space
- **PRIME GROUND-FLOOR LOCATION** offering excellent signage opportunities
- **THREE LARGE WINDOWS** overlooking bustling South King Street
- **UNMATCHED VISIBILITY** with high foot traffic and steady vehicular flow
- **HISTORIC CHARM** in a building that blends character with functionality

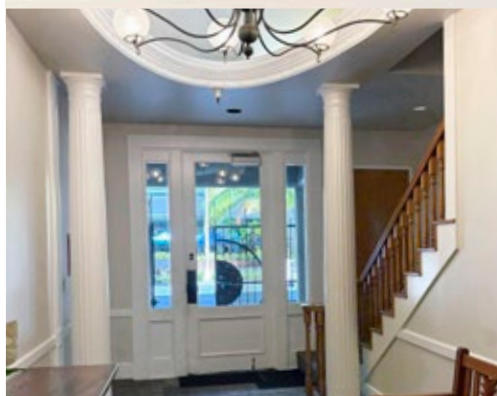


FOCUS+
EXPERIENCE
= RESULTS



Posted 11/24/25. The information presented was obtained from sources believed reliable. While we do not doubt its accuracy, we have not verified it and make no guarantee, warranty or representation about it.

ESTABLISH A STRONG PRESENCE IN HONOLULU'S CENTRAL BUSINESS DISTRICT



**Hawaii
Commercial
Real Estate**
hawaiiCRE.com



RYLAND HART (S)
Sales/Leasing | HI LIC #RS-87807
ryland@hawaiiCRE.com
(808) 499-4801

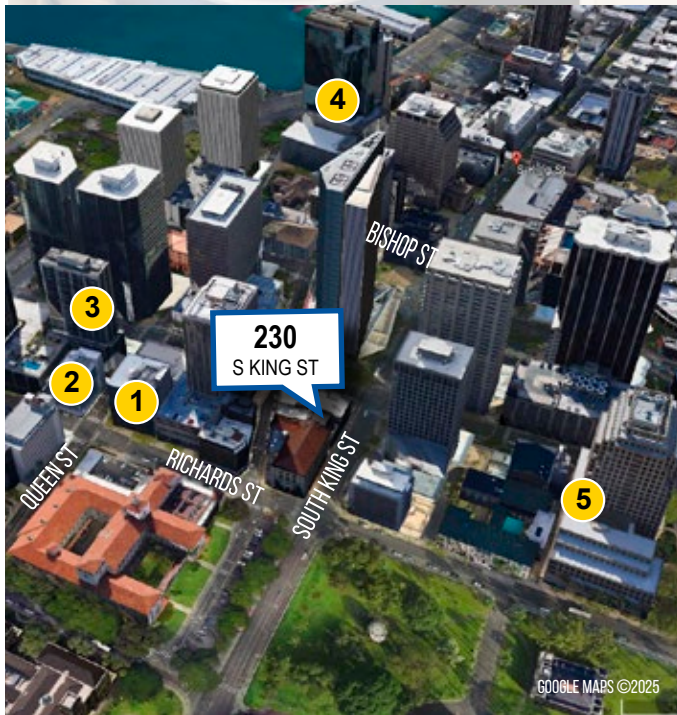


HEY HO (S)
Sales/Leasing | HI LIC #RS-87274
Hey@hawaiiCRE.com
(808) 201-2288

223 S KING STREET

PRIME GROUND FLOOR SPACE FOR LEASE

The AUSTIN BUILDING

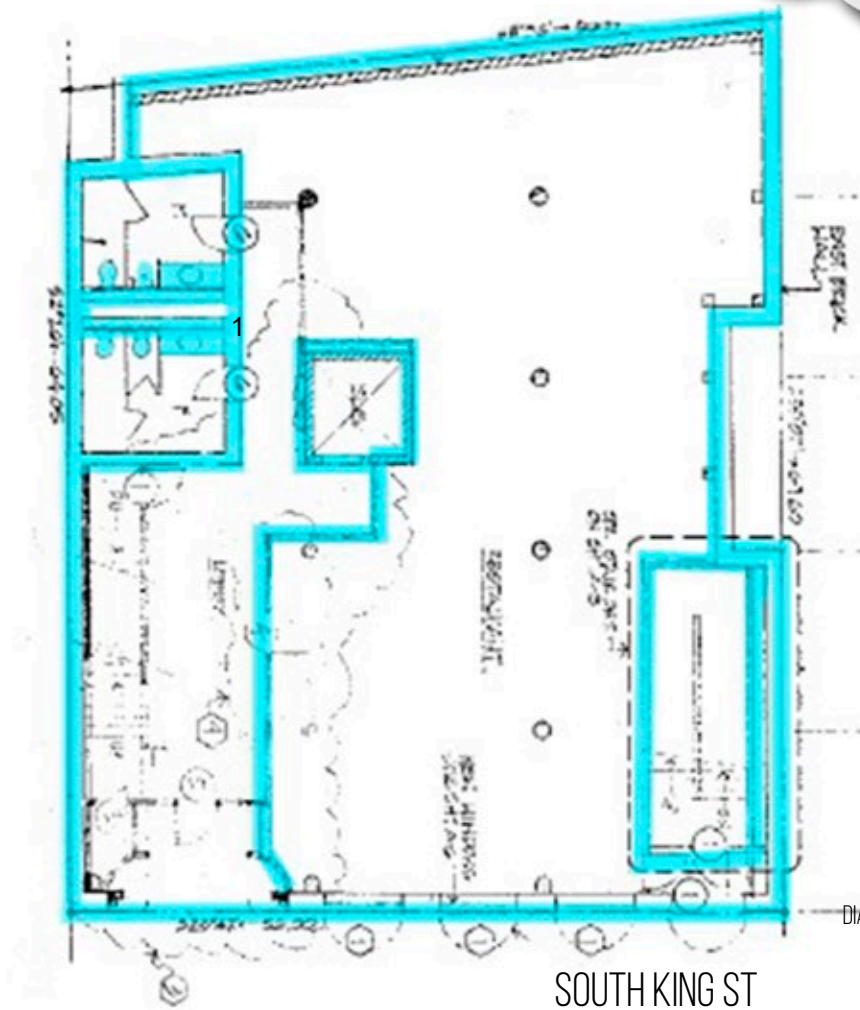


PARKING OPTIONS

PROPERTY	ADDRESS	PARKING COMPANY
1	TISSUE GENESIS	810 Richards Street
2	345 QUEEN ST	345 Queen Street
3	HARBOR SQUARE	700 Richards Street
4	HARBOR COURT	847 Bethel Street
5	ALI'I PLACE	1099 Alakea Street

Posted 11/24/25. The information presented was obtained from sources believed reliable. While we do not doubt its accuracy, we have not verified it and make no guarantee, warranty or representation about it.

ESTABLISH A STRONG PRESENCE IN HONOLULU'S CENTRAL BUSINESS DISTRICT



**Hawaii
Commercial
Real Estate**
hawaiiCRE.com



RYLAND HART (S)
Sales/Leasing | HI LIC #RS-87807
ryland@hawaiiCRE.com
(808) 499-4801



HEY HO (S)
Sales/Leasing | HI LIC #RS-87274
Hey@hawaiiCRE.com
(808) 201-2288