

FOR LEASE

GREAT RESTAURANT LOCATION!



605 COOKE STREET
HONOLULU, HI 96813



PROPERTY INFORMATION

SPACE	1,031 SF
BASE RENT	\$3.00/SF/MONTH
ESTIMATED CAM	\$0.85/SF/MONTH

PROPERTY DESCRIPTION

Great restaurant location within walking distance to Downtown and major Kakaako buildings. Restaurant equipment with an exhaust hood, grease trap, and gas stove are included in the space.

PROPERTY LOCATION

Located at the corner of Cooke St. and Ilaniwai St., near Queen St. Property is across from the new Nohona Hale with 111 new rental units. Many residential high rises and businesses within walking distance.

For More Information Contact:



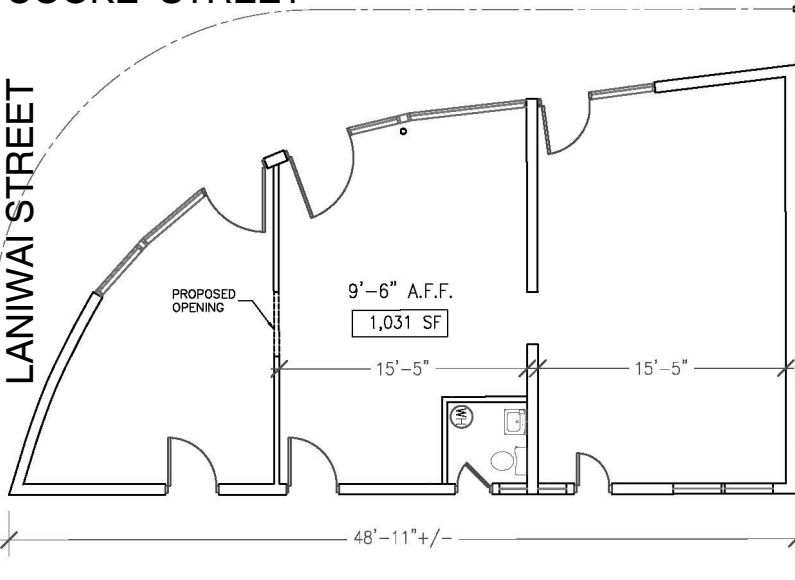
Kathryn M. Rehg (B)
 Vice President
 808-228-4356 M
 kathyrehg@hawaiiicre.com



Hawaii Commercial Real Estate, LLC

hawaiiicre.com | facebook.com/hawaiiicre

COOKE STREET



FLOOR PLAN | 1,031 SF

Posted 02/11/2020. Please note: the information above has been obtained from sources believed reliable. While we do not doubt its accuracy, we have not verified it and make no guarantee, warranty or representation about it.

