

SUBLEASE: TOPA FINANCIAL CENTER, Fort Street Tower



READY. SET. GO. CAPITALIZE on EXISTING Upgrades



745 FORT STREET, SUITE 1600
HONOLULU, HI 96813

▶ **LANDMARK LOCATION** in the heart of Honolulu's Business District on the corner of Bishop and Ala Moana Blvd.

▶ **5,423 SF of Office Space** (Approximate)

▶ **TERM:** Through February 29, 2028

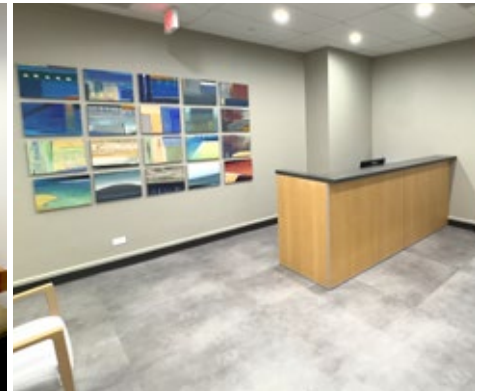
▶ **OCEAN VIEWS**

▶ **16 Private Offices**

▶ **Kitchenette**

▶ **2 Conference Rooms**

Posted 09/01/25. The information presented was obtained from sources believed reliable. While we do not doubt its accuracy, we have not verified it and make no guarantee, warranty or representation about it.



**Hawaii
Commercial
Real Estate**

FOCUS+
EXPERIENCE
RESULTS



hawaiiCRE.com | 841 Bishop St., #2208, Honolulu, HI 96813



VICTOR ARCAYENA (S)
Senior Vice President

HI LIC #RS-70259
victor@hawaiiCRE.com
(808) 292-9154



RYLAND HART (S)
Sales/Leasing

HI LIC #RS-87807
ryland@hawaiiCRE.com
(808) 499-4801



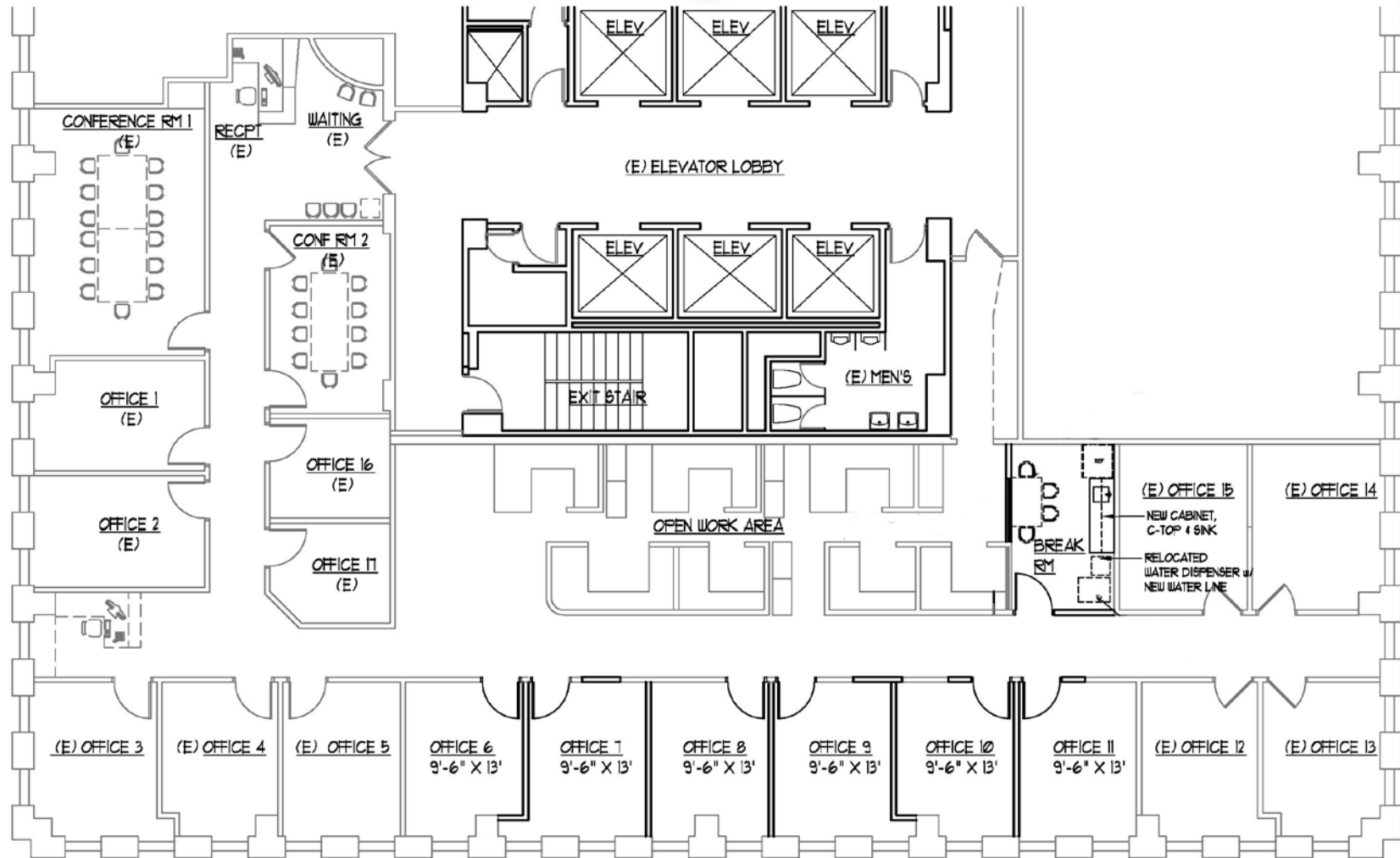
HEY HO (S)
Sales/Leasing

HI LIC #RS-87274
Hey@hawaiiCRE.com
(808) 201-2288

SUBLEASE: TOPA FINANCIAL CENTER, Fort Street Tower



READY. SET. GO. CAPITALIZE on EXISTING Upgrades



SCALE: 1/8" = 1'-0"



**Hawaii
Commercial
Real Estate**

FOCUS+
EXPERIENCE
RESULTS



hawaiiCRE.com | 841 Bishop St., #2208, Honolulu, HI 96813



VICTOR ARCAYENA (S)
Senior Vice President

HI LIC #RS-70259
victor@hawaiiCRE.com
(808) 292-9154



RYLAND HART (S)
Sales/Leasing

HI LIC #RS-87807
ryland@hawaiiCRE.com
(808) 499-4801



HEY HO (S)
Sales/Leasing

HI LIC #RS-87274
Hey@hawaiiCRE.com
(808) 201-2288