



Google Earth©2023

WALK
98

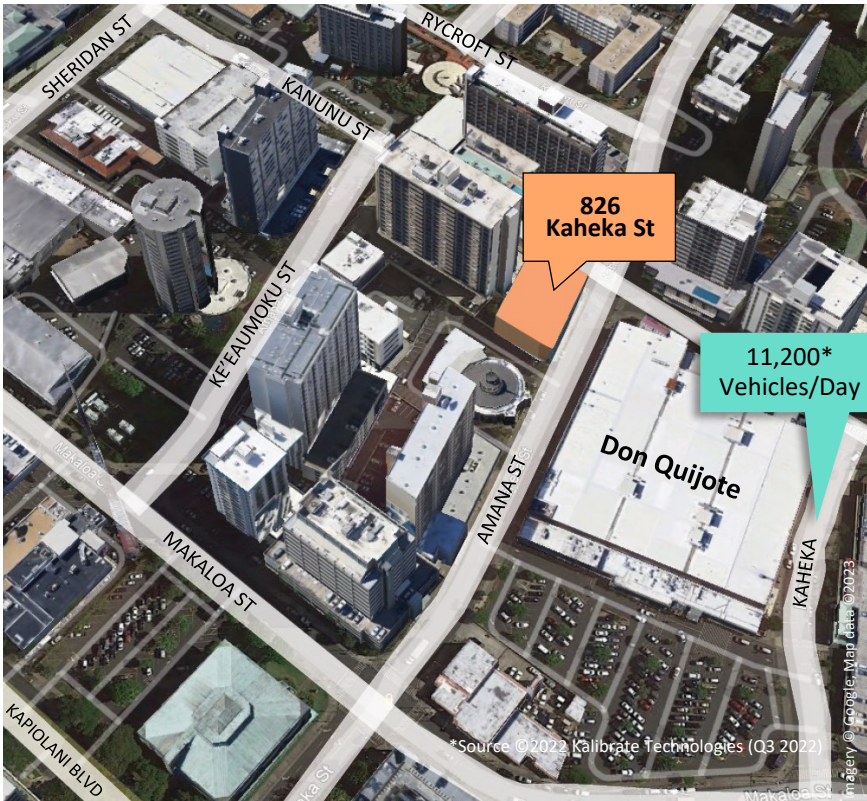
TRANSIT
75

BIKE
94

Walk Score®

Source: ©2023 Walk Score

826 Kaheka Street is conveniently located in the Ala Moana—Kakaako neighborhood. Close to major retailers: Ala Moana Shopping Center, Walmart, Sam's Club and Don Quijote. Highly visible with heavy foot and vehicular traffic.



*Source: ©2022 Kalibrate Technologies (Q3 2022)

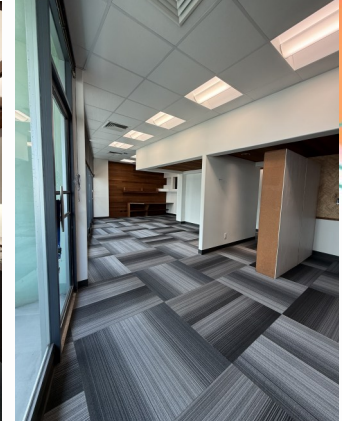
FOR LEASE

826 KAHEKA ST, HONOLULU HI 96814

GROUND FLOOR RETAIL & 3RD FLR OFFICE



UNIT #305



GROUND FLR

Floor/Unit	RSF	GROSS RATE	DESCRIPTION
1st	1,500	\$3.95/SF/MO	Ground floor, open layout with private restroom. Electricity separately metered.
3rd—#305	682	\$2.95/SF/MO	Open layout with private office space and modern finishes throughout. Electricity separately metered.

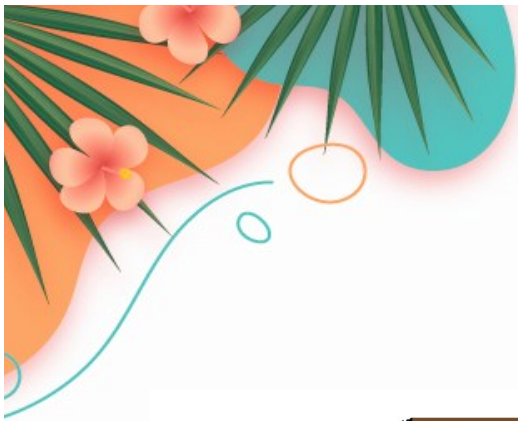


Hawaii
Commercial
Real Estate
hawaiiacre.com

SUMMER MERIT (S), RS-83889

Vice President | 808-375-9531
summer@hawaiiacre.com

Posted 03/24/2025. The information has been obtained from sources believed reliable. While we do not doubt its accuracy, we have not verified it and make no guarantee, warranty or representation about it.



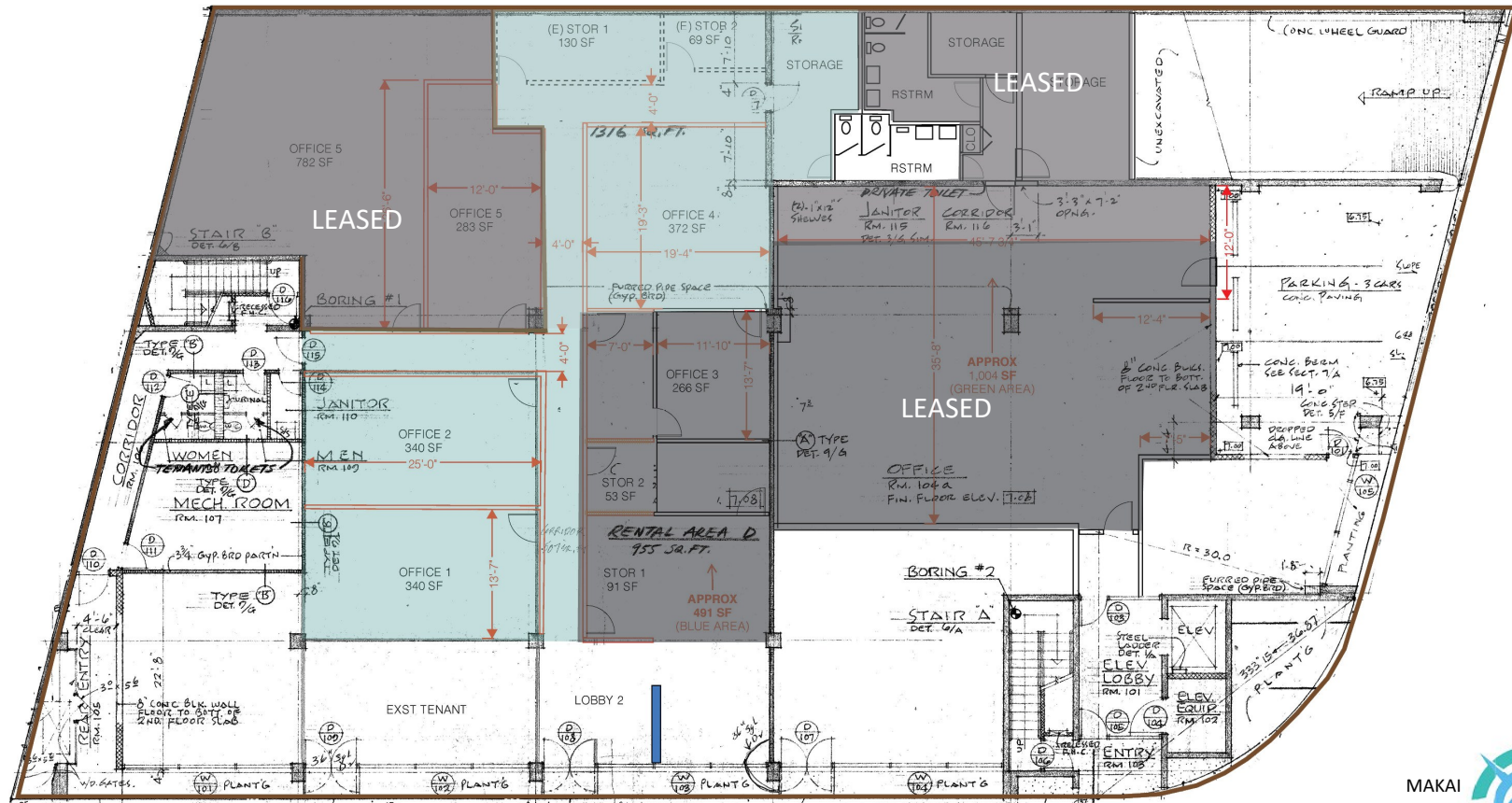
FOR LEASE: RETAIL/OFFICE

826 KAHEKA FLOOR PLAN

GROUND FLOOR SPACE

M
A
K
A
L
O
A

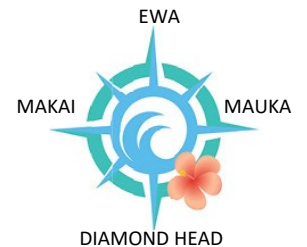
S
T
R
E
E
T



K
A
N
U
N
U

S
T
R
E
E
T

KAHEKA STREET



SUMMER MERIT (S), RS-83889, Vice President

808-375-9531 | summer@hawaiicre.com | www.hawaiicre.com

Posted 01/08/2025. The information has been obtained from sources believed reliable. While we do not doubt its accuracy, we have not verified it and make no guarantee, warranty or representation about it.