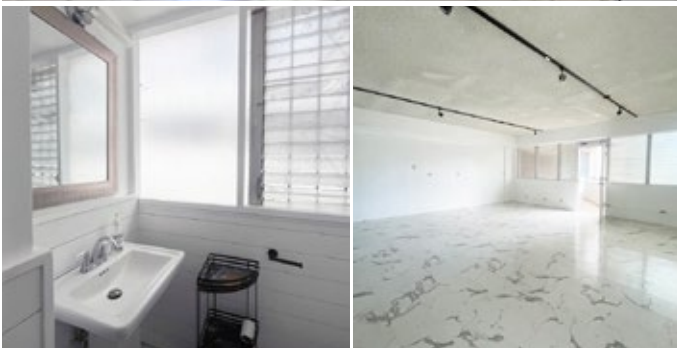


Office/Retail Condos For Sale

# UNIVERSITY PLAZA



## INVESTMENT / OWNER-USER OPPORTUNITY

**FEE SIMPLE COMMERCIAL CONDOS** in University Plaza on the 2nd floor of this 3-story walk-up feature an open floor plan. Space is ideal for office or retail use.

**RARE OPPORTUNITY** for Owner/Users and Investors to own commercial space in this prime location between UH Manoa and Waikiki.

- ADDRESS: 931 University Ave, Honolulu, HI 96826
- FEE SIMPLE
- HIGH VISIBILITY 2<sup>ND</sup> FLR Spaces with a traffic count of 21,500 Vehicles/day\*
- EXCELLENT LOCATION near UH Manoa, Waikiki and Waiānueue, the first phase of the Kapa'akea's mixed-use development.
- ACCESS to H-1 and Kapiolani Blvd and King Street
- ZONING: BMX-3
- OPEN FLOOR PLAN
- ON-SITE Customer Parking

PRICE  
IMPROVEMENT

UNIT	TMK	SIZE (SF)	ASKING PRICE	UPDATED ASKING PRICE
201	1-2-7-16-2-34	571	<del>\$345,000.00</del>	\$295,000.00
202	1-2-7-16-2-35	590	<del>\$345,000.00</del>	\$295,000.00
203	1-2-7-16-2-36	590	<del>\$345,000.00</del>	\$295,000.00
204	1-2-7-16-2-37	590	<del>\$345,000.00</del>	\$295,000.00
206	1-2-7-16-2-39	642	<del>\$345,000.00</del>	\$295,000.00
208	1-2-7-16-2-41	642	<del>\$345,000.00</del>	\$295,000.00
209	1-2-7-16-2-42	620	<del>\$345,000.00</del>	\$295,000.00



**Hawaii  
Commercial  
Real Estate**  
hawaiiacre.com

**JAMIE BROWN (B), CCIM SIOR**  
President, # RB-17203  
(808) 429-9757 | jamie@hawaiiacre.com

**SUMMER MERIT (S)**  
Vice President, Lic# RS-83889  
(808) 375-9531 | summer@hawaiiacre.com

**RYLAND HART (S)**  
Associate, Lic# RS-87807  
(808) 499-4801 | ryland@hawaiiacre.com

This document has been prepared by Hawaii Commercial Real Estate (HCRE) for advertising and general information only. HCRE makes no guarantees, representations or warranties of any kind, expressed or implied, regarding the information including, but not limited to, warranties of content, accuracy and reliability. Posted 06/23/2025.





# Demographics



HONOLULU, HI 96826	0.5 MILE	1 MILE	3 MILE
2024 Population	19,188	59,382	218,232
Households	8,340	26,141	98,119
Median Age	37.3	42.8	45.8
Median Household Income	\$63,326	\$65,352	\$79,410
High School Graduate	24.6%	22.4%	20.3%
Some College/Assoc Degree	31.2%	28.2%	26.1%
Bachelor/Grad/Prof Degree	38.5%	44.0%	48.3%
Total Businesses	571	2,863	15,479

Source: Data provided by Esri (2024,2029) ©2024 Esri  
September 13,2024



**JAMIE BROWN (B), CCIM SIOR**  
President, # RB-17203  
(808) 429-9757 | jamie@hawaiiacre.com

**SUMMER MERIT (S)**  
Vice President, Lic# RS-83889  
(808) 375-9531 | summer@hawaiiacre.com

**RYLAND HART (S)**  
Associate, Lic# RS-87807  
(808) 499-4801 | ryland@hawaiiacre.com



This document has been prepared by Hawaii Commercial Real Estate (HCRE) for advertising and general information only. HCRE makes no guarantees, representations or warranties of any kind, expressed or implied, regarding the information including, but not limited to, warranties of content, accuracy and reliability. Posted 06/23/2025.