

FOR LEASE

430 Sumner Street, Honolulu, HI 96817

Iwilei Stand-Alone Property

Price
Reduced
~~\$1.48~~
\$1.35



Approximately 12,000 SF of Warehouse - Showroom - Office | 20,613 SF Lot

PROPERTY INFORMATION

BASE RENT:

\$1.35/SF/Month with 3% annual increases

COMMON AREA MAINTENANCE:

Estimated at \$0.37/SF/Month

FEATURES

- Convenient, central location
- Open sprinklered warehouse
- Showroom and office space
- Large fenced lot
- 12 Parking stalls
- Can accommodate a 40' container

FOR MORE INFORMATION CALL



Kathryn M. Rehg (B)
Vice President
808-228-4356 M
kathyrehg@hawaiiCRE.com



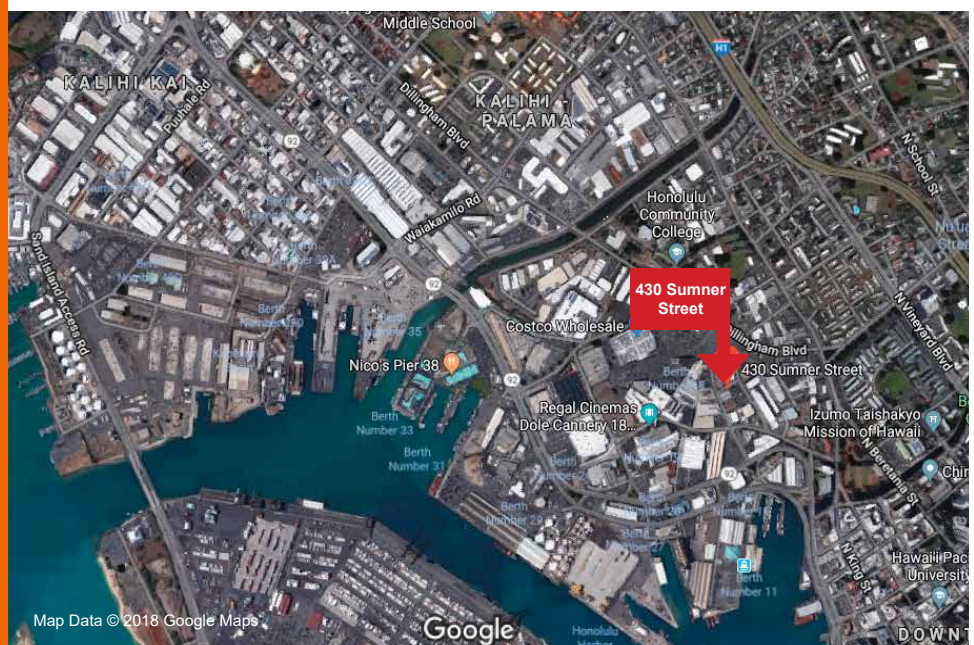
Ted R. Ketcham (S)
Vice President
808-674-9000 M
ted@hawaiiCRE.com

Even though obtained from sources deemed reliable, no warranty or representation, express or implied, is made as to the accuracy of the information herein, and it is subject to errors, omissions, change of price, rental or other conditions, withdrawal without notice, and to any special listing conditions imposed by our principals. Posted 04/03/2019

PROPERTY DESCRIPTION

Rare opportunity to lease a stand-alone warehouse property on the corner of Sumner and Pine Streets in Iwilei near Honolulu Harbor, Downtown, Kakaako and Waikiki. Convenient to the freeway and the Airport. Ideal property for single user near Longs, Costco, Lowes, Home Depot, City Mill, West Marine and Liliha Bakery.

Approximately 12,000 square feet of warehouse including showroom and office space. The 20,613 property is fenced and gated with access from both Sumner and Pine Streets. Includes 12 parking stalls plus room to stage a 40' container.



Map Data © 2018 Google Maps

Google



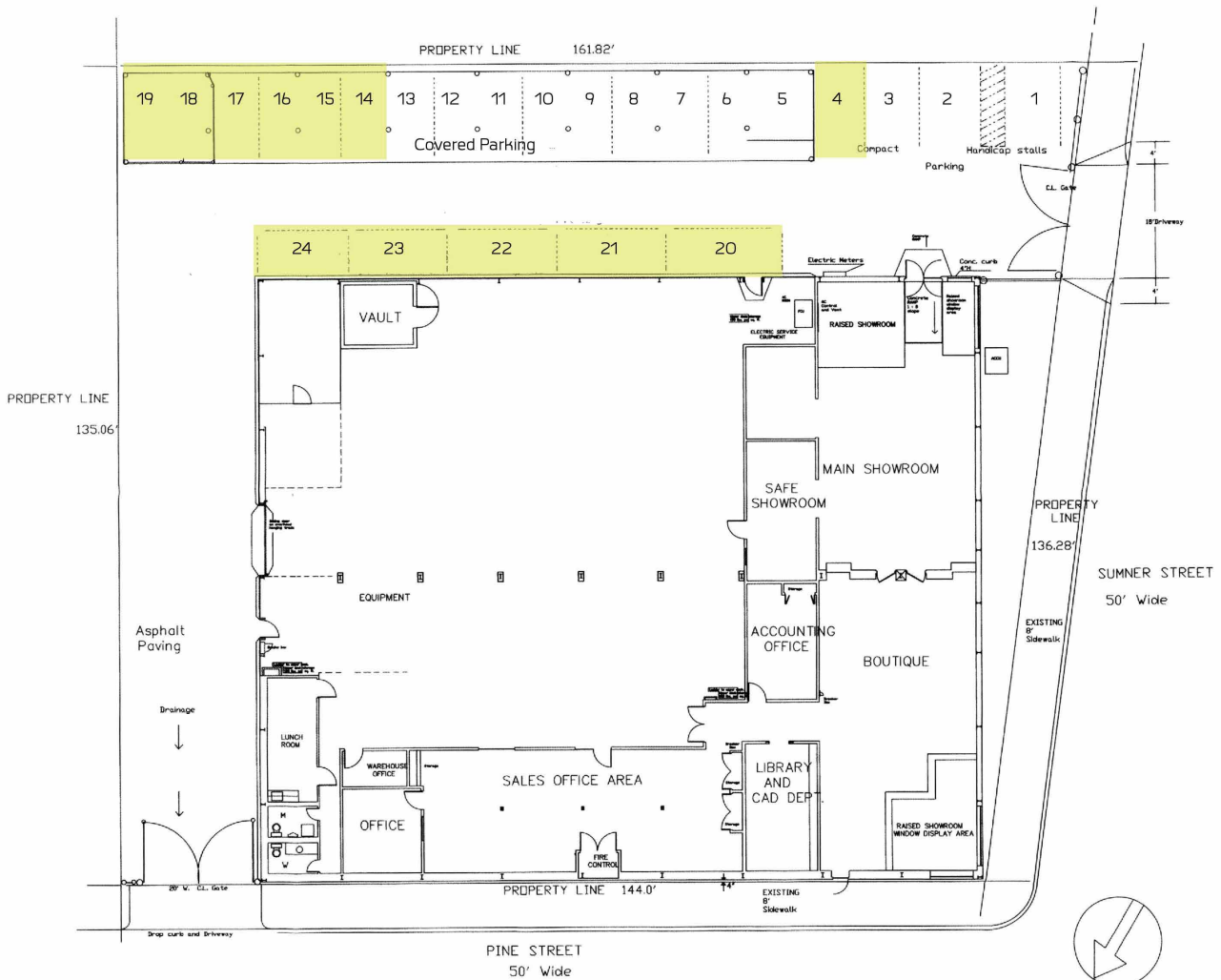
733 Bishop St., #151, Honolulu, HI 96813
hawaiiCRE.com | www.facebook.com/hawaiiCRE



James M. Brown (B)
Individual Membership

FLOOR PLAN

430 Sumner Street, Honolulu, HI 96817



FOR MORE INFORMATION CALL



Kathryn M. Rehg (B), Vice President
 808-228-4356 M
 kathyrehg@hawaiiCRE.com



Ted R. Ketcham (S), Vice President
 808-674-9000 M
 ted@hawaiiCRE.com